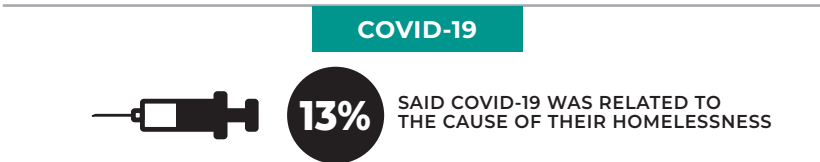
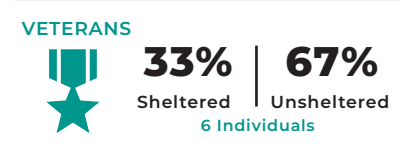
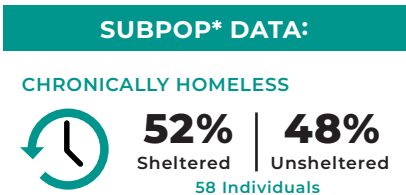
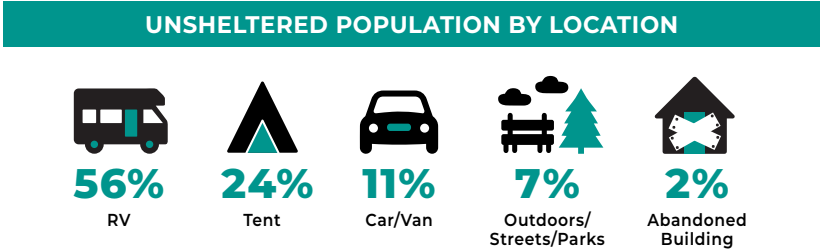
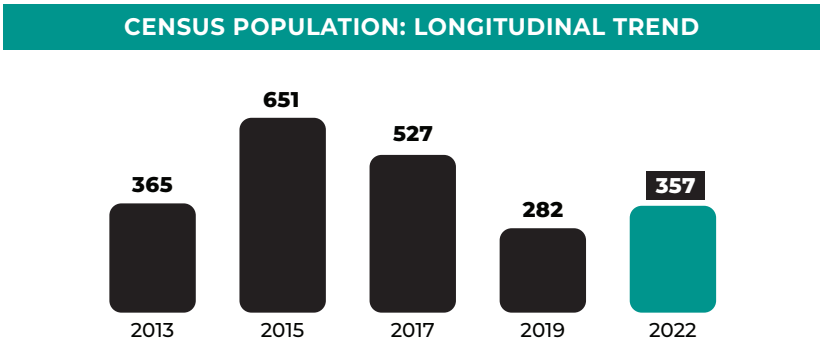
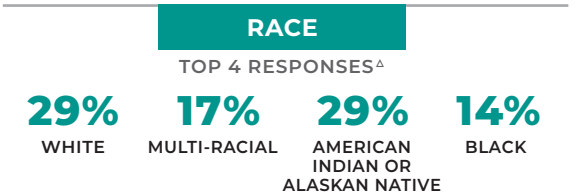
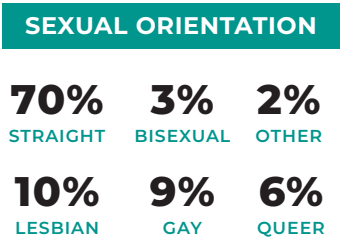
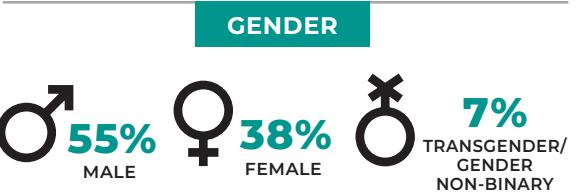
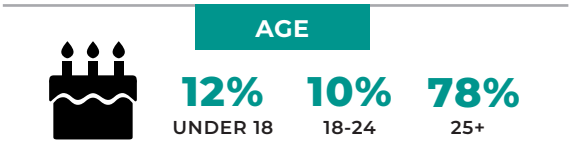
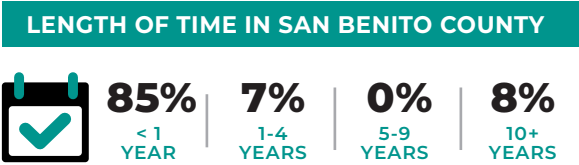
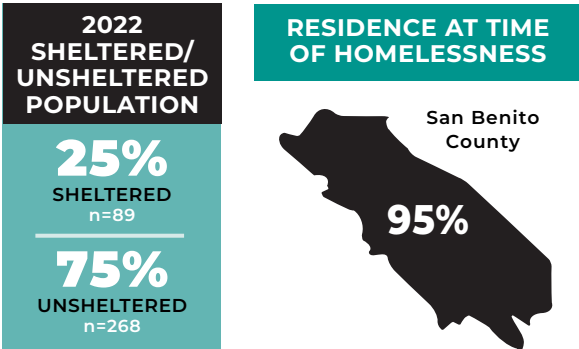


SAN BENITO COUNTY

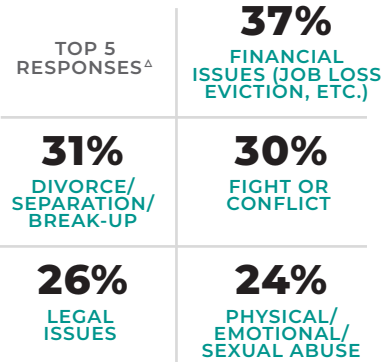
2022 HOMELESS POINT-IN-TIME COUNT & SURVEY

Every two years, during the last 10 days of January, communities across the country conduct comprehensive counts of the local homeless populations in order to measure the prevalence of homelessness in each local Continuum of Care.

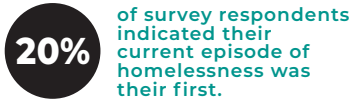
The 2022 San Benito County Point-in-Time Count was a community-wide effort conducted on January 27th, 2022. In the weeks following the street count, a survey was administered to 112 unsheltered and sheltered individuals experiencing homelessness in order to profile their experience and characteristics.



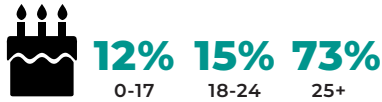
PRIMARY CONDITION THAT LEAD TO HOMELESSNESS+



FIRST EPISODE OF HOMELESSNESS



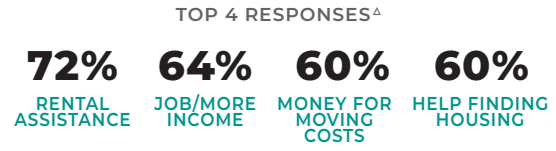
AGE AT FIRST EPISODE OF HOMELESSNESS



DURATION OF CURRENT EPISODE OF HOMELESSNESS

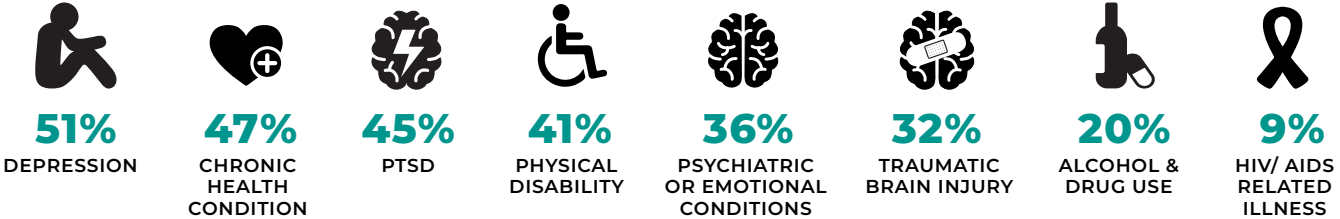


WAYS TO OBTAIN PERMANENT HOUSING+



SELF REPORTED HEALTH+

Current health conditions that may affect the housing stability or employment of those experiencing homelessness.

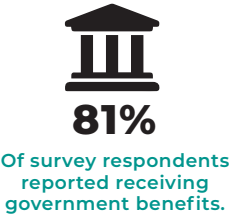


DISABLING CONDITIONS

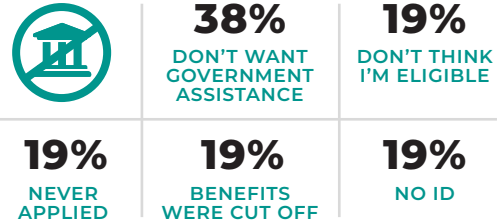


A disabling condition is defined by HUD as a developmental disability, HIV/AIDS, or a long-term physical or mental impairment that impacts a person's ability to live independently but could be improved with stable housing.

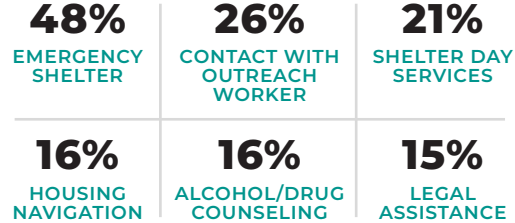
GOVERNMENT SERVICES AND ASSISTANCE



REASONS FOR NOT RECEIVING ANY GOVERNMENT ASSISTANCE+ Top 5 Responses^Δ



SERVICES CURRENTLY ACCESSING+ Top 6 Responses^Δ



*SUBPOPULATION DEFINITIONS

CHRONICALLY HOMELESS
An individual with one or more disabling conditions or a family with a head of household with a disabling condition who:

- » Has been continuously homeless for 1 year or more and/or;
- » Has experienced 4 or more episodes of homelessness within the past 3 years.

VETERANS
Persons who have served on active duty in the Armed Forces of the United States. This does not include inactive military reserves or the National Guard unless the person was called up to active duty.

FAMILIES
A household with at least one adult member (persons 18 or older) and at least one child member (persons under 18).

+ Multiple response question, results may not add up to 100%.
Δ Only displaying top responses, all response data will be available in frequency data tables.
Note: Some percentages have been rounded so total percentage will equal 100%.

Source: Applied Survey Research, 2022, San Benito County Homeless Census & Survey, Watsonville, CA.